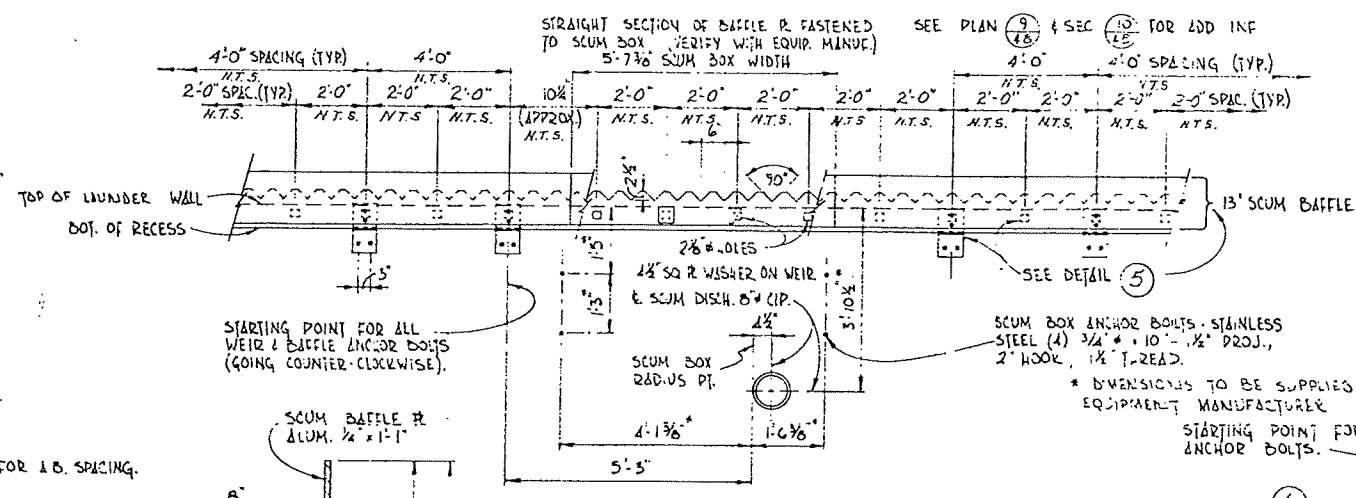


LAUNDRER BRACKET LAYOUT 1
SCALE - VERT. 1/4" = 1'-0"
HORIZ. NO SCALE

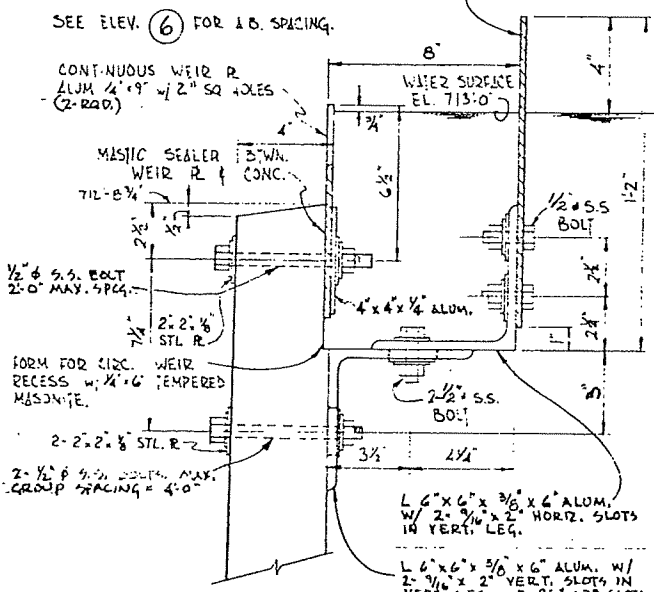
LAUNDRER BRACKET ELEVATIONS		
NUMBER PER CLARIFIER	TOP ELEVATIONS	
12	709'-0"	
2	709'-0" - 709'-3 1/2"	STEP
10	709'-3 1/2"	
2	709'-3 1/2" - 709'-7"	STEP
10	709'-7"	
2	709'-7" - 709'-10 1/2"	STEP
10	709'-10 1/2"	
2	709'-10 1/2" - 710'-2"	STEP
10	710'-2"	
2	710'-2" - 710'-5 1/2"	STEP
10	710'-5 1/2"	
2	710'-5 1/2" - 710'-9"	STEP
9	710'-9"	
83 TOTAL	71 STANDARD & 12 STEP	

PRECAST LAUNDRER SECTIONS		
NUMBER PER CLARIFIER	LAUNDRER HEIGHT	ELEV. OF SUPPORT BRACKET
12	3'-8 3/4"	709'-0"
12	3'-5 1/4"	709'-5 1/2"
12	3'-1 3/4"	709'-7"
12	2'-10 1/4"	709'-10 1/2"
12	2'-6 3/4"	710'-2"
12	2'-3 1/4"	710'-5 1/2"
10	1'-11 1/4"	710'-9"
83 TOTAL	3'-8 3/4"	709'-0"

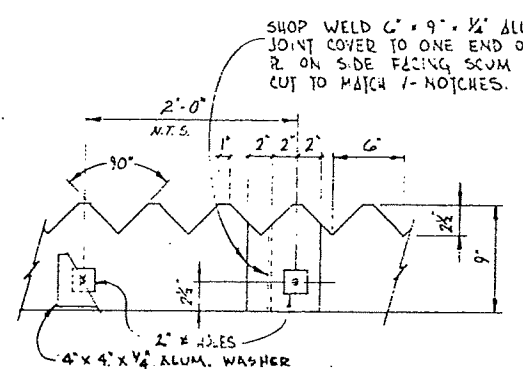
NOTE: DESIGN OF LAUNDERS SHALL BE FOR BUDYANT FORCES FOR WATER LEVELS AS SHOWN IN SECTION 2 ON THIS SHEET WITH NO WATER IN LAUNDERS. THEY SHALL ALSO BE DESIGNED FOR THEIR OWN WEIGHT PLUS 30PSF FOR TANK EMPTY.



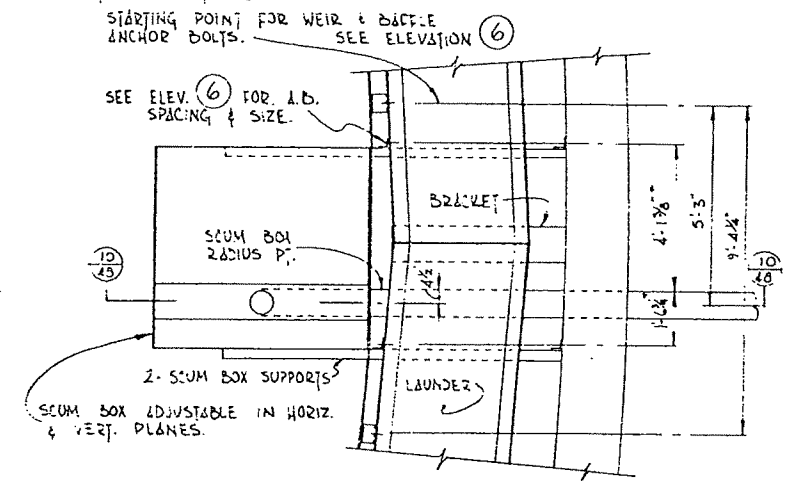
ELEVATION - WEIR & SCUM BAFFLE 6
SCALE - 1/2" = 1'-0"



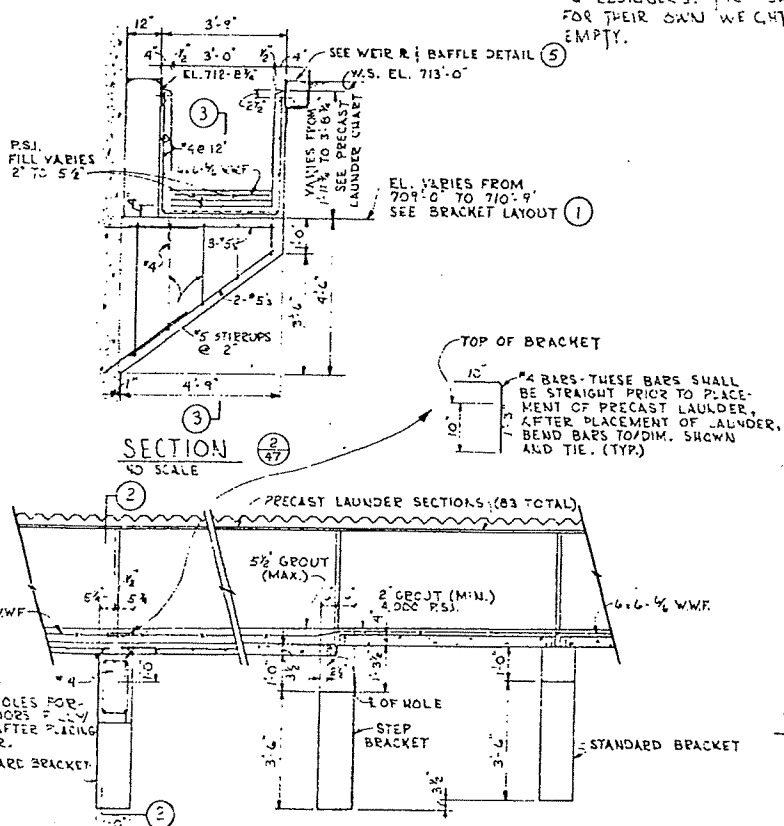
WEIR PLATE & SCUM BAFFLE DETAIL 5
SCALE - 3/8" = 1'-0"



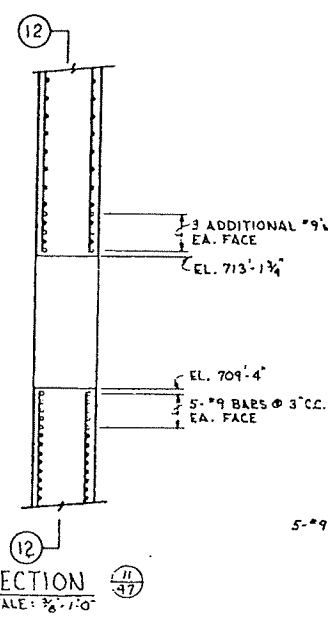
ELEVATION - WEIR & SPICE 7
SCALE - 1/2" = 1'-0"



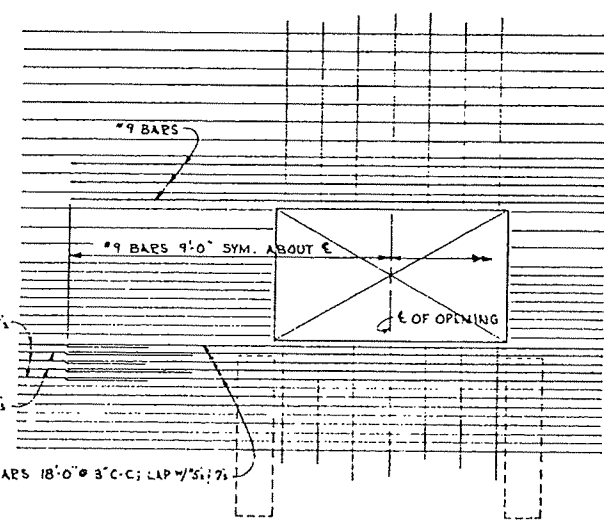
PART PLAN 9
SCALE - 3/8" = 1'-0"



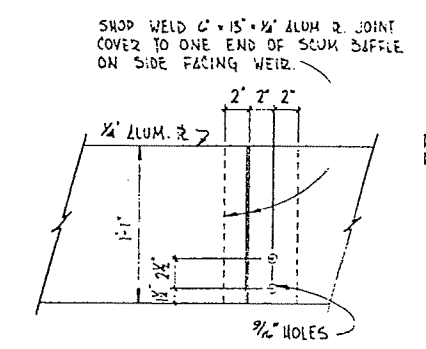
SECTION 3
SCALE - NO SCALE



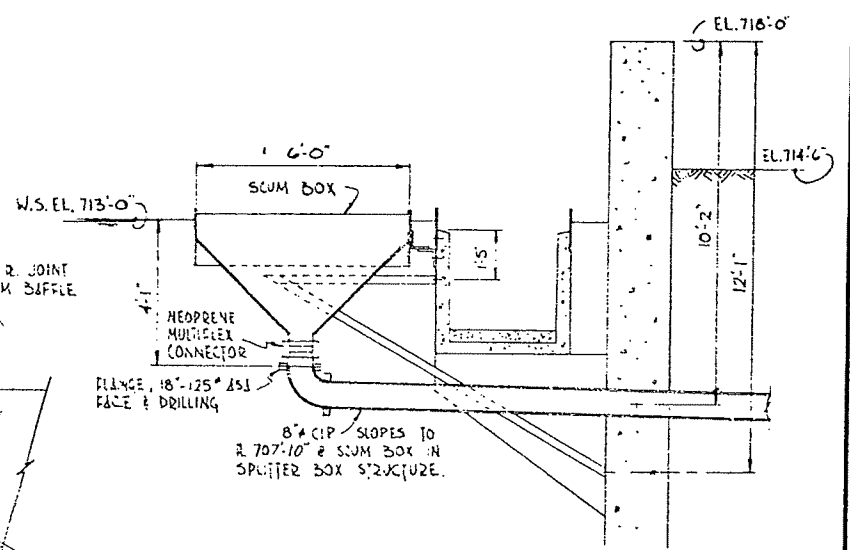
SECTION 11
SCALE - 3/8" = 1'-0"



SECTION 12
SCALE - 3/8" = 1'-0"



ELEVATION - BAFFLE & SPICE 8
SCALE - 1/2" = 1'-0"



SECTION 10
SCALE - 3/8" = 1'-0"

NO.	REVISION	DESCRIPTION	DATE	BY
1				
2				
3				
4				
5				
6				
7				
8				
9				
10				
11				
12				
13				
14				
15				
16				
17				
18				
19				
20				
21				
22				
23				
24				
25				
26				
27				
28				
29				
30				
31				
32				
33				
34				
35				
36				
37				
38				
39				
40				
41				
42				
43				
44				
45				
46				
47				
48				
49				
50				
51				
52				
53				
54				
55				
56				
57				
58				
59				
60				
61				
62				
63				
64				
65				
66				
67				
68				
69				
70				
71				
72				
73				
74				
75				
76				
77				
78				
79				
80				
81				
82				
83				
84				
85				
86				
87				
88				
89				
90				
91				
92				
93				
94				
95				
96				
97				
98				
99				
100				

